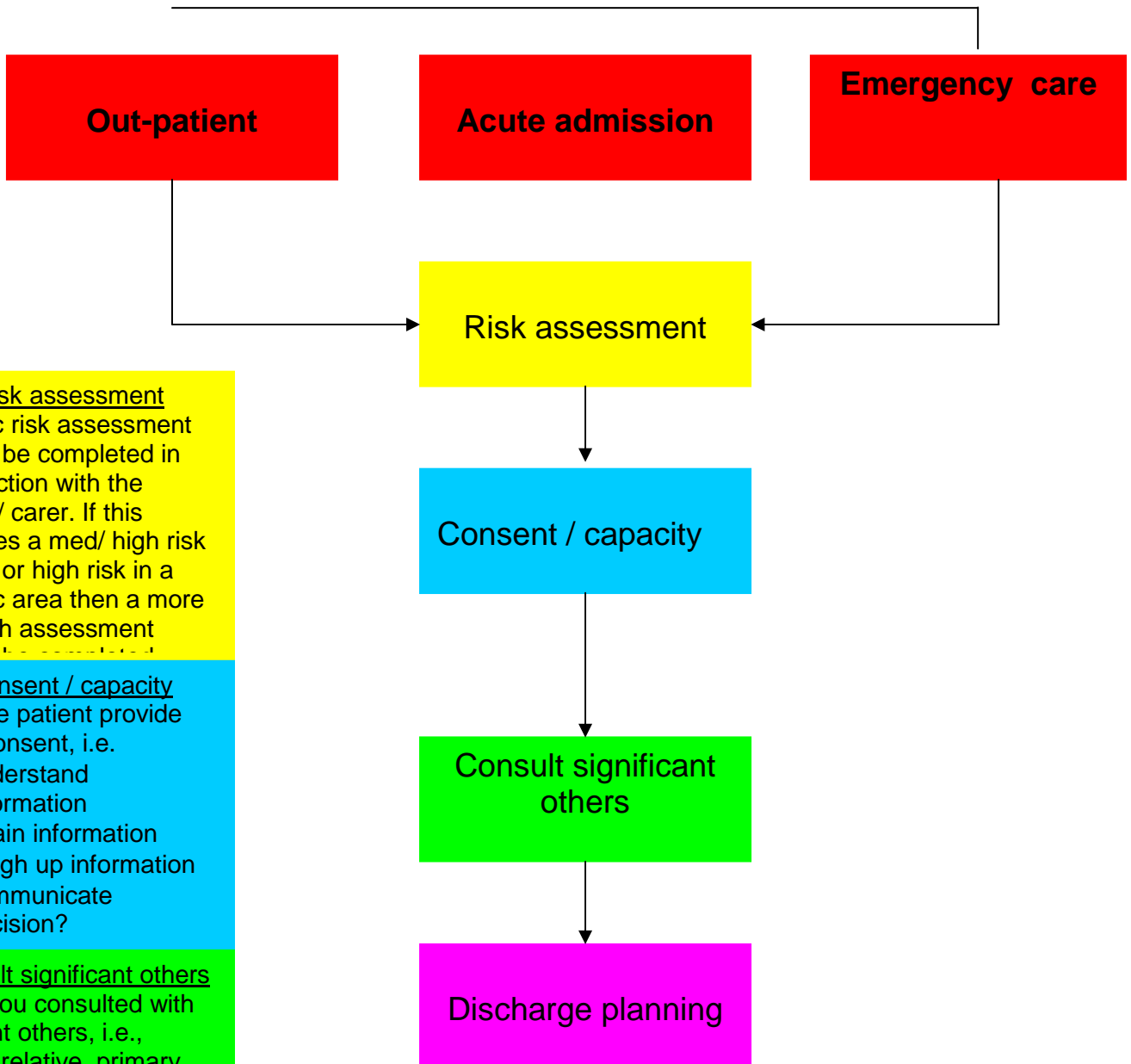


Core principles for management of a patient with reduced cognitive impairment/vulnerability



Risk assessment

A basic risk assessment should be completed in conjunction with the patient/ carer. If this indicates a med/ high risk overall or high risk in a specific area then a more in-depth assessment should be completed.

Consent / capacity

Can the patient provide valid consent, i.e.

- understand information
- retain information
- weigh up information
- communicate decision?

Consult significant others

Have you consulted with relevant others, i.e., adults' relative, primary carer, welfare guardian, if appointed, or anyone else involved in the patient's care.

Discharge planning

On admission, identify EDD and consult all involved in care such as carer, family or relevant professionals, e.g. Learning Disability Nurse, Social Worker.

Vulnerable Patient Pathway

